

IMPERIAL
3tsav

2/3 BHK Modern Residential Apartments

COMMUNITY, KIDSPARADISE, SPORTS, GREENERY, HEALTH

*Where
Life is a
Utsav*



2/3 BHK Modern Residential Apartments



2/3 BHK Modern Residential Apartments

213

1/2/3 BHK
APARTMENTS

10,000

SQFT CLUB HOUSE

24 X 7

Security

A place where every corner exudes exclusivity and celebrates your bond

At Imperial Utsav, we have redefined the definition of space and luxury so that you and your family can experience the exclusivity that you deserve. The 1/2/3 BHK residential apartments are designed to offer you more space to move around openly and that befits your taste & style. Aesthetically pleasing interiors and creative intelligence are weaved together in the making of Imperial Utsav, to create an abode to revel in its elegance and functionality.



Healthy Lifestyle

It's not just for fitness enthusiasts but for everyone to adapt a healthy activity in their daily routine to live a better life. Our excellent jogging track, well-equipped gymnasium and a yoga lawn are built to offer you a space to indulge in your well-being that is in your convenience now. This is your time to stay ahead in the fitness game and invest in your future self.

Jogging Track



Gymnasium



Yoga Lawn





Community Living

There is everything for every age group to indulge in things they enjoy doing the most and make every day count. From the senior citizen corner to the kids play area, Imperial Utsav is a desirable residential apartment for your family to experience life that is not mundane.

Senior Citizen Corner



Library



Kids Play Area





Sports Activity

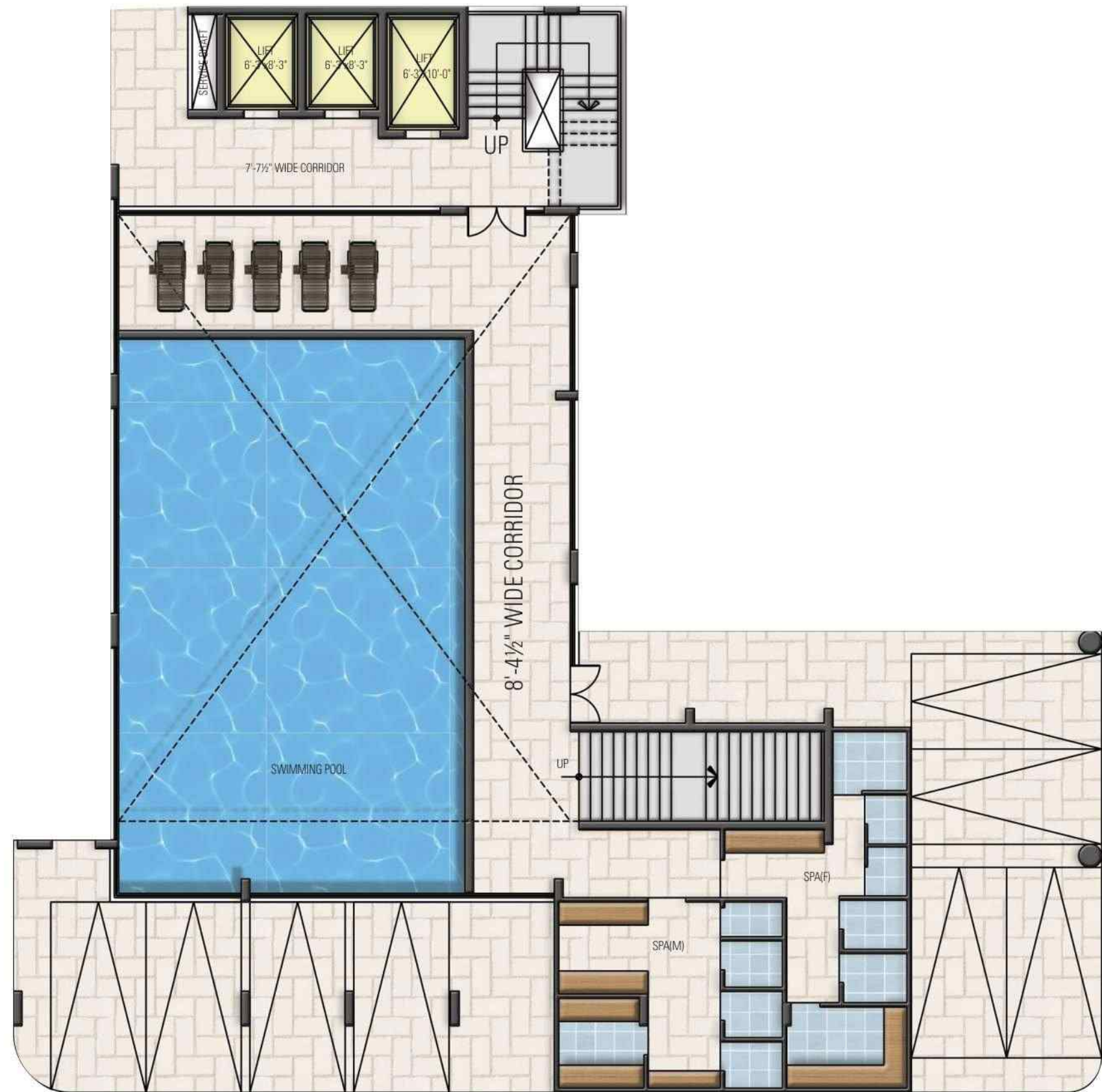
When you are enveloped by services curated for you to have an exclusive lifestyle. Our perfectly laid out sports areas where you can keep up with your favorite sports or indulge in a fun game on your weekends. Let the exclusive amenities of Imperial Utsav lead you to a good life which is filled with excitement and happiness.

Basket Ball & Badminton Court



Indoor Games





BASEMENT FLOOR PLAN



LEGENDS

1. Entry /exit
2. Security Cabin
3. Lobby
4. Multi Purpose Hall
5. Party Lawn
6. Gymnasium
7. Indoor Games
8. Library
9. Creche
10. Shops
11. Jogging Track
12. Gazebo
13. Central Lawn
14. Yoga Lawn
15. Fountain
16. Water Body
17. Senior Citizen Corner
18. Ladies Chit Chat Corner
19. Sculpture Court
20. Basket Ball Pole
21. Badminton Court
22. Kids' Play Area
23. Sand Pit
24. Aroma Garden
25. Palm Court
26. Flower Bed
27. Services
28. Parking



GROUND FLOOR PLAN



TYPICAL (1st TO 7th), NINTH & TENTH FLOOR PLAN



EIGHTH FLOOR PLAN



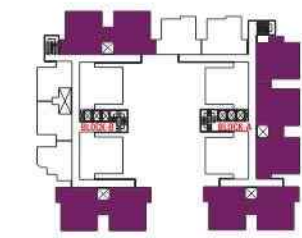


ELEVENTH & TWELFTH FLOOR PLAN



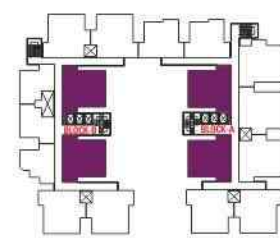
3BHK TYPE 1

3 BHK + 3 TOILETS_TYPE-1
 B.U.A. = **1072** Sq.ft.
 SALEABLE AREA = **1447** Sq.ft.
 CARPET AREA = **955.05** Sq.ft.
 BALCONY AREA = **58.62** Sq.ft.



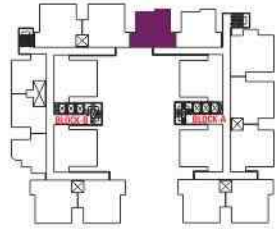
3BHK TYPE 2

3 BHK + 3 TOILETS_TYPE-2
 B.U.A. = **1075** Sq.ft.
 SALEABLE AREA = **1451** Sq.ft.
 CARPET AREA = **958.84** Sq.ft.
 BALCONY AREA = **58.62** Sq.ft.



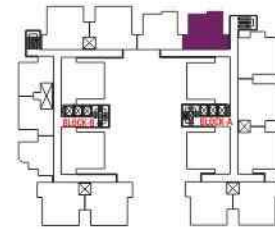
3BHK TYPE 3

3 BHK + 3 TOILETS_TYPE-3
 B.U.A. = **1016** Sq.ft.
 SALEABLE AREA = **1372** Sq.ft.
 CARPET AREA = **910.10** Sq.ft.
 BALCONY AREA = **52.00** Sq.ft.



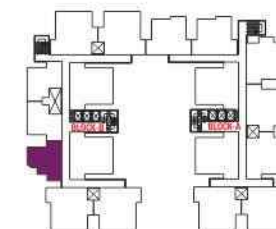
2BHK + STUDY

2 BHK + STUDY_TYPE-1
 B.U.A. = **928** Sq.ft.
 SALEABLE AREA = **1253** Sq.ft.
 CARPET AREA = **820.22** Sq.ft.



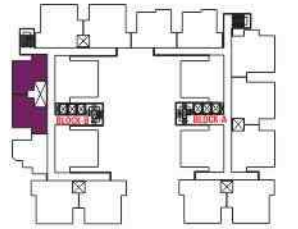
2BHK TYPE 2

2 BHK_TYPE-2
 B.U.A. = **662** Sq.ft.
 SALEABLE AREA = **894** Sq.ft.
 CARPET AREA = **571.75** Sq.ft.
 BALCONY AREA = **45.63** Sq.ft.



2BHK TYPE 1

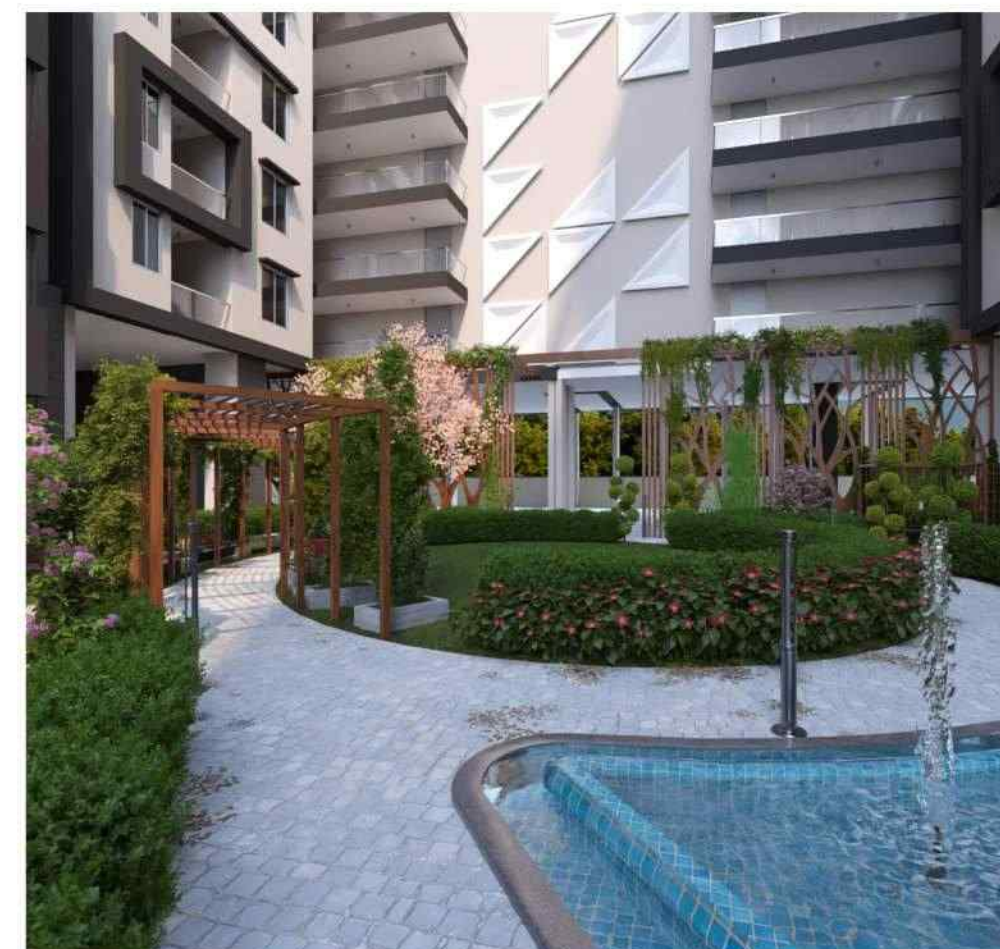
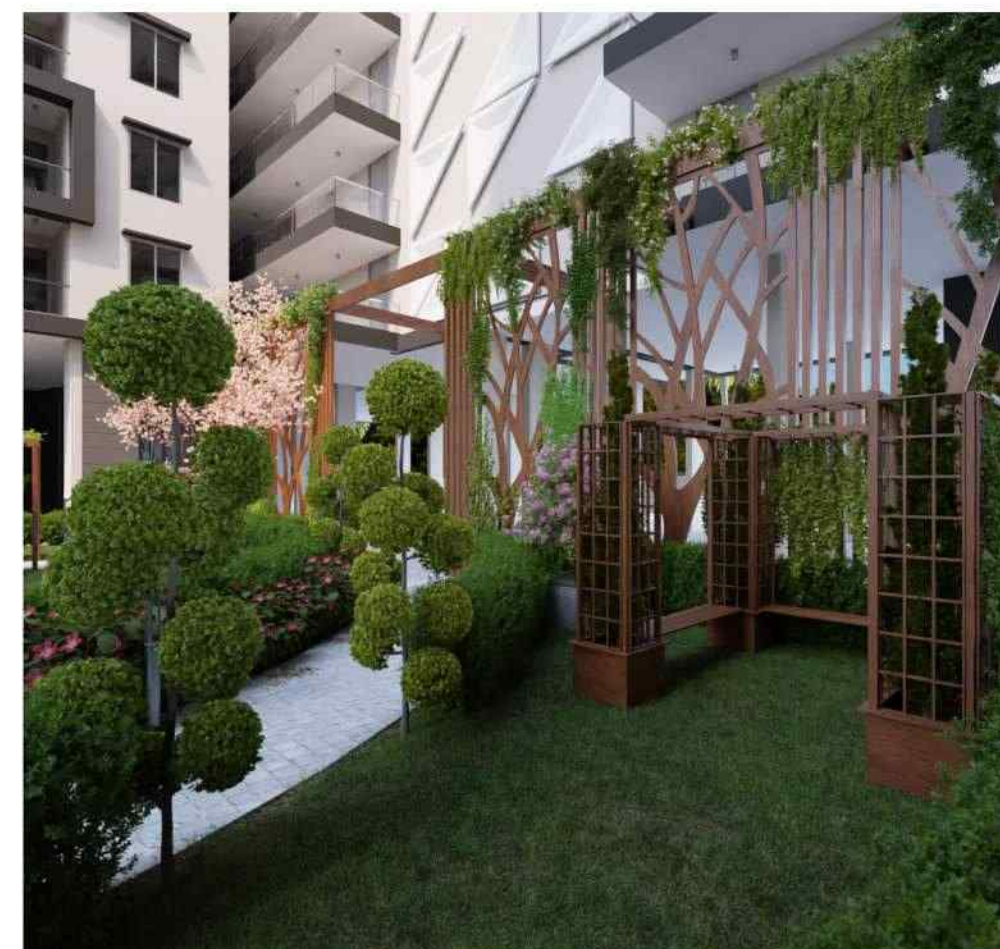
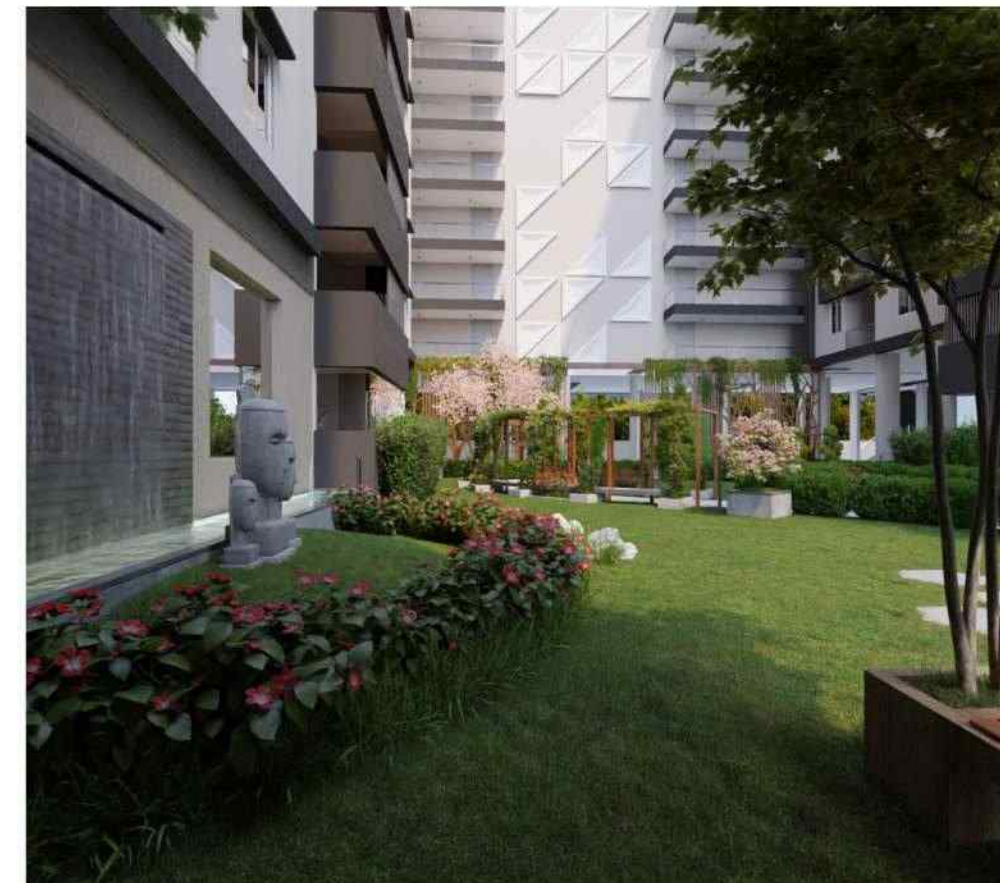
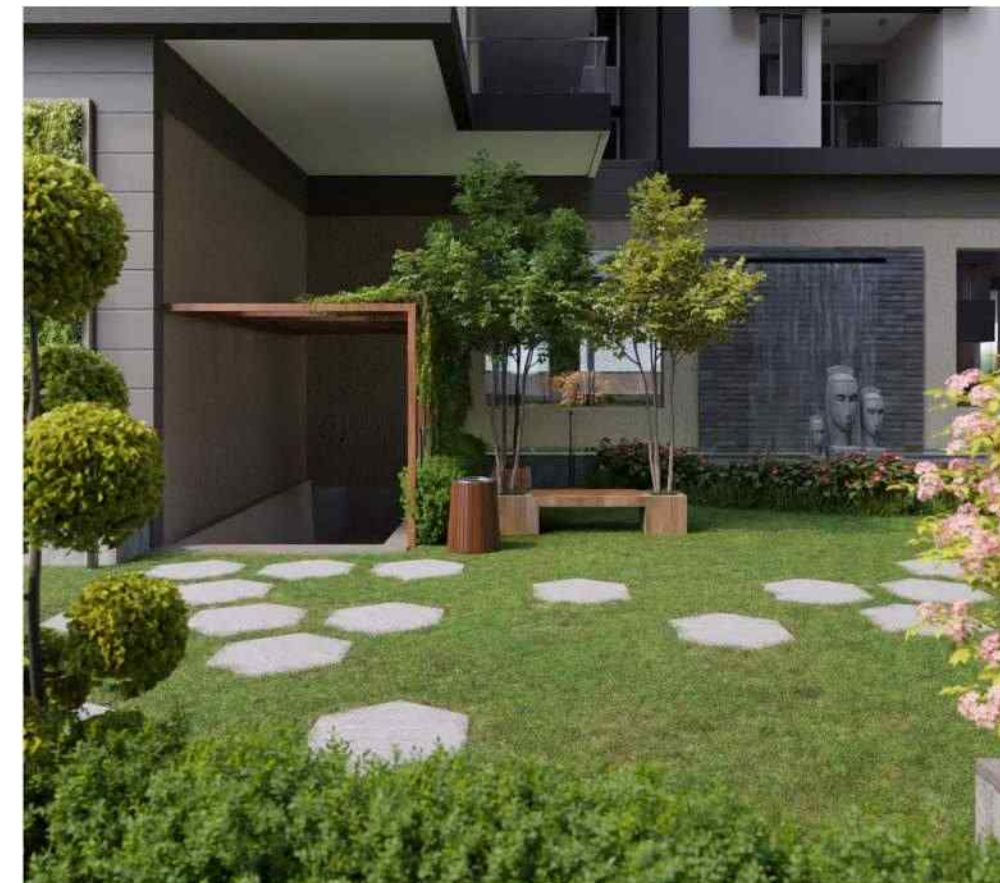
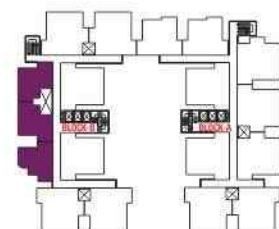
B.U.A. = **662** Sq.ft.
 SALEABLE AREA = **894** Sq.ft.
 CARPET AREA = **568.31** Sq.ft.
 BALCONY AREA = **46.50** Sq.ft.





1 BHK

1 BHK
B.U.A. : **385** Sq.ft.
Carpet Area : **322.60** Sq.ft.
Saleable Area : **470** Sq.ft.
Balcony Area : **23.25** Sq.ft.





SALIENT FEATURES

DRAWING/DINING

- ◆ Imported Marble flooring
- ◆ P.O.P. work in line on all walls and ceiling
- ◆ High quality Acrylic emulsion paint on all walls and ceiling
- ◆ 8'-0" Height Main Entrance designer Veneered Flush door with wooden door frame, 50 mm thick
- ◆ High Quality Euro Profile aluminum windows with Three Track System (With Wire mesh provision)
- ◆ High-end Electrical switches of international make

BEDROOMS

- ◆ Designer Large Size Tile Flooring
- ◆ P.O.P. work in line on all walls and ceiling
- ◆ High quality Acrylic emulsion paint
- ◆ 8'-0" Height Designer Veneered/Laminated Flush door with wooden door frame, 35 mm thick
- ◆ High Quality Euro Profile aluminum windows with Three Track System (With Wire mesh provision)
- ◆ High-end Electrical switches of international make

TOILETS

- ◆ Premium anti-skid tiles
- ◆ 8'-0" Height Designer Veneered/Laminated Flush door with wooden door frame, 35 mm thick
- ◆ Over/Under the counter basin with Marble/Granite Top
- ◆ Separate wet area
- ◆ Hand Shower and Head Shower in Master Bedroom Toilet
- ◆ Single Lever Sanitary Fittings of International Quality
- ◆ Sanitary ware of International Standards
- ◆ High-end Electrical switches of international make
- ◆ Provision of Geyser and Exhaust
- ◆ Grid False Ceiling

EXTERNAL AMENITIES

- ◆ Central Garden
- ◆ Roof Top Party Terrace
- ◆ Party Lawn
- ◆ Kids Play Area
- ◆ Yoga Deck
- ◆ Chit Chat Corner
- ◆ Pickleball Court
- ◆ Basket Ball Pole

- ◆ Jogging Track
- ◆ Senior Citizen Corner
- ◆ Green Walkways
- ◆ Lush Plantation
- ◆ Gazebo Sitting

KITCHEN

- ◆ Elegant kitchen
- ◆ Imported flooring or equivalent
- ◆ Granite Designer Counter top and Wall tile dedo or equivalent
- ◆ P.O.P. work in line on all walls and ceiling
- ◆ High Quality Acrylic emulsion paint in left over areas
- ◆ High Quality Euro Profile aluminum windows with Three Track System (With Wire mesh provision)
- ◆ Gas Pipe Line and Gas detector
- ◆ Provision of Geyser and Exhaust and R.O. unit
- ◆ High-end Electrical switches of international make
- ◆ Double Bowel Sink and Washing machine point in utility area/balcony



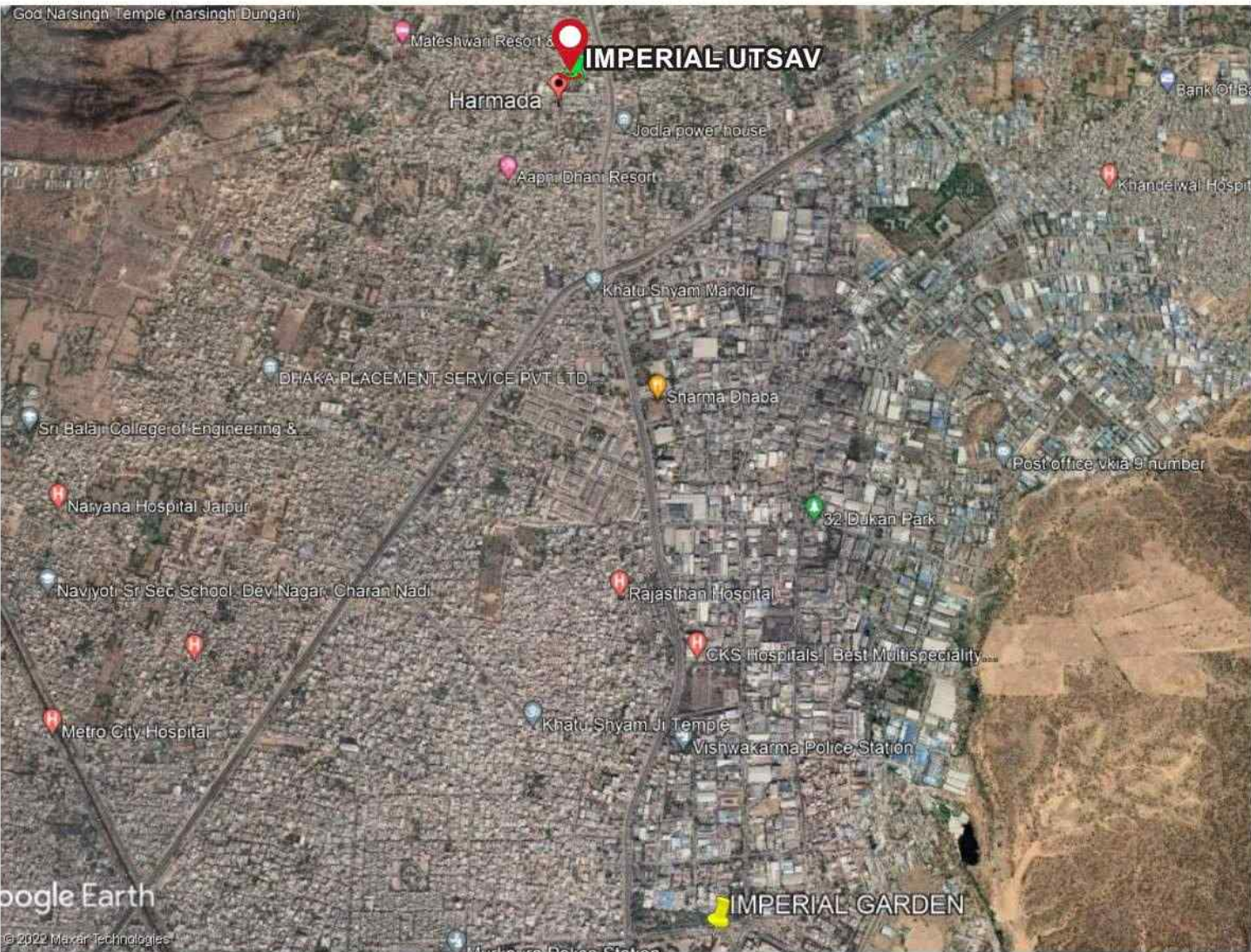
THE GROUP

Nurtured over the years with strong roots, commitment, hard work, determination and dedication, Ball Park aims to create place that everyone would call it their 'Home' proudly. Today the company has grown into a large business conglomerate with varied diversified plans ahead with the determination to establish itself as a stalwart in its domain. Ball Park is a team of highly skilled, technical as well as non-technical professionals. Ball Park's aim is to surpass our customer's aspirations.

Ongoing Project



Imperial Garden, 5/H/II/R, Sector 5, Vidhyadhar Nagar, Jaipur



Distance Chart

Important Places			
Railway Station	12.5 KM	Saket Hospital	1.7 km
Sanganer Bus Stop	4.5 KM	Apex Hospital	4.1 Km
Jaipur International Airport	6.0 KM	Dhanvantari Hospital	2.7 Km
Jawahar Circle	5.2 KM	Metro Mass Hospital	4.6 Km
		HCG Cancer Hospital	4.2 Km



Builders & Developers

Office : Khasra No. 312/1, Anokha Gaon, Sikar Road,
Harmada, Jaipur, Rajasthan 302013
Website : www.imperialutsav.com

For More Information Call : **9785517000**

Vastu Consultant : **Vastuart**

RERA No. **RAJ/P/2022/1981** www.rera.rajasthan.gov.in